

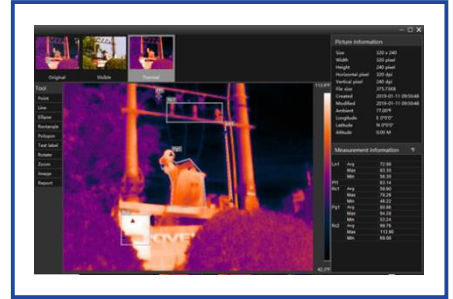
# Handheld Thermal Camera DP-21/DP-22

The DP-22 handheld thermal camera features 320x240 infrared resolution, increased temperature range of -10°C to 450°C, professional computer analysis software and a thermal sensitivity of 60mK makes it well suited to most of inspections. It can be widely applied in mechanical equipment testing, automobile maintenance testing, HVAC maintenance, substation, equipment temperature troubleshooting and other scenes.



## Features:

- Compact and rugged design
- Import grade 320x240 infrared detector
- 3.5' IPS full-color screen display images clearly
- Dual camera with thermal and visual image
- Built-in 8GB EMMC store up to 30,000 photos
- Durable Li-ion battery ensure 5 hours' continuous use
- Wi-Fi and USB to realize convenient data transmission
- Support region, point, high and low temperature tracking
- The strong Pip function can help users locate faults efficiently
- Three-picture in one (scene picture, visible light, thermal image) for better observation



Parameters	DP-21	DP-22
<b>Detector resolution</b>	220* 160	320* 240
<b>Detector parameters</b>	Pixel size: 12um; NETD: < 65mK @25°C; Frame frequency: 9Hz	
<b>Temperature measuring parameters</b>	Temperature measuring range: -10°C - 450°C; Temperature measuring accuracy: ±2°C or ±2%, whichever is greater	
<b>Temperature measuring method</b>	Central point temperature measuring, regional temperature measuring, automatic high and low temperature tracking, and above-threshold alarm	
<b>Infrared lens parameters</b>	4mm,F/1.0; FOV: H35°: V26°	4mm,F/1.0; FOV: H56°: V42°
<b>HD camera parameters</b>	Resolution of 640 * 480; Field angle of 90°	
<b>Picture storage parameters</b>	8GB EMMC to store 30,000 pictures; TIFF three-picture format (pictures of the HD camera, thermal imaging and scene status)	
<b>Interface</b>	USB TYPE-C interface (charging/data transmission)	
<b>Screen</b>	IPS 3.5' full-color screen	
<b>Image mode</b>	Soft mode, texture enhancement, and high contrast	
<b>Image fusion</b>	HD image, thermal imaging, bispectral fusion, PIP	
<b>Battery</b>	A capacity of >6 hours	
<b>LED</b>	Supported	
<b>Key</b>	Trigger key, up, down, left and right keys, confirm/menu key, and power/return key	
<b>WIFI</b>	2.4G	
<b>Menu functions</b>	Language, emissivity, temperature unit, high temperature alarm, memory card format, date setting, automatic shutdown, brightness, factory settings restoration	
<b>Analysis software</b>	The computer analysis system can conduct secondary analysis on all infrared thermal imaging pictures taken by the device	